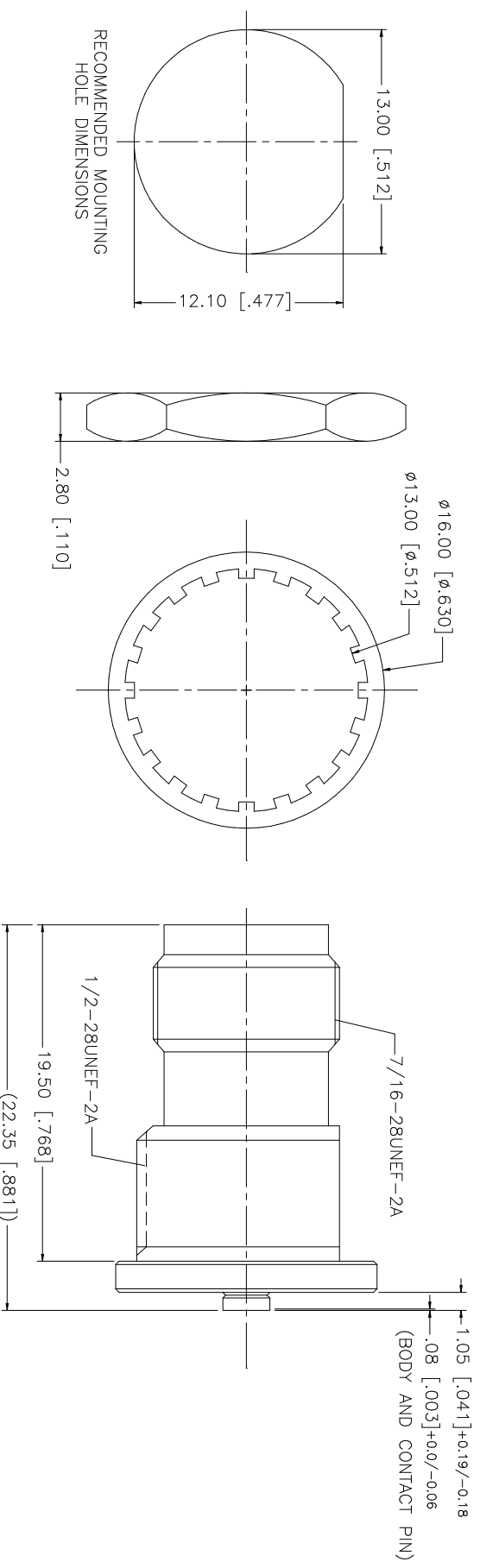


| REV. | DATE     | DESCRIPTION                           |
|------|----------|---------------------------------------|
| NC   | 04/06/04 | INITIAL RELEASE                       |
| A    | 05/26/06 | REVISE PART DESCRIPTION TO "AMC" JACK |



NOTES:  
 1. MAX. PANEL THICKNESS = 5mm

| UNLESS OTHERWISE SPECIFIED DIMENSIONS ARE INCHES AND FOR CUSTOMER REFERENCE ONLY. | UNLESS OTHERWISE SPECIFIED DIMENSIONS ARE INCHES AND FOR CUSTOMER REFERENCE ONLY. | UNLESS OTHERWISE SPECIFIED DIMENSIONS ARE INCHES AND FOR CUSTOMER REFERENCE ONLY. | UNLESS OTHERWISE SPECIFIED DIMENSIONS ARE INCHES AND FOR CUSTOMER REFERENCE ONLY. | UNLESS OTHERWISE SPECIFIED DIMENSIONS ARE INCHES AND FOR CUSTOMER REFERENCE ONLY. | UNLESS OTHERWISE SPECIFIED DIMENSIONS ARE INCHES AND FOR CUSTOMER REFERENCE ONLY. |
|---|---|---|---|---|---|
| 8   |   |   |   |   |   |
| 7   |   |   |   |   |   |
| 6   | HEX NUT   | BRASS   | NICKEL  | 1   |   |
| 5   | LOCK WASHER   | BRASS   | NICKEL  | 1   |   |
| 4   | BODY  | BRASS   | NICKEL  | 1   |   |
| 3   | INSULATOR   | TEFLON  | NATURAL   | 1   |   |
| 2   | CONTACT PIN   | BRASS   | GOLD  | 1   |   |
| 1   | BODY  | BRASS   | NICKEL  | 1   |   |
|   | DESCRIPTION   | MATERIAL  | FINISH  | QTY   |   |

| APPROVALS    | DATE     | DESCRIPTION |
|--------------|----------|-------------|
| DRAWN G.R.S. | 05/26/06 |             |
| CHECKED      |          |             |
| ISSUED       |          |             |
| SHEET 1 OF 1 |          |             |

| DO NOT SCALE DRAWING | CAD FILE            | DWG. NO.     | REV. | SIZE | SCALE |
|----------------------|---------------------|--------------|------|------|-------|
|                      | C:/242/242192RP.DWG | 242192RP.DWG | A    | A    | NA    |

**Amphenol Connex**

AMC JACK TO TNC REVERSE POLARITY  
 JACK BULKHEAD ADAPTER

242192RP